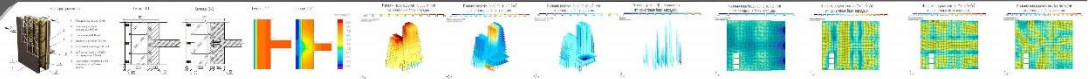
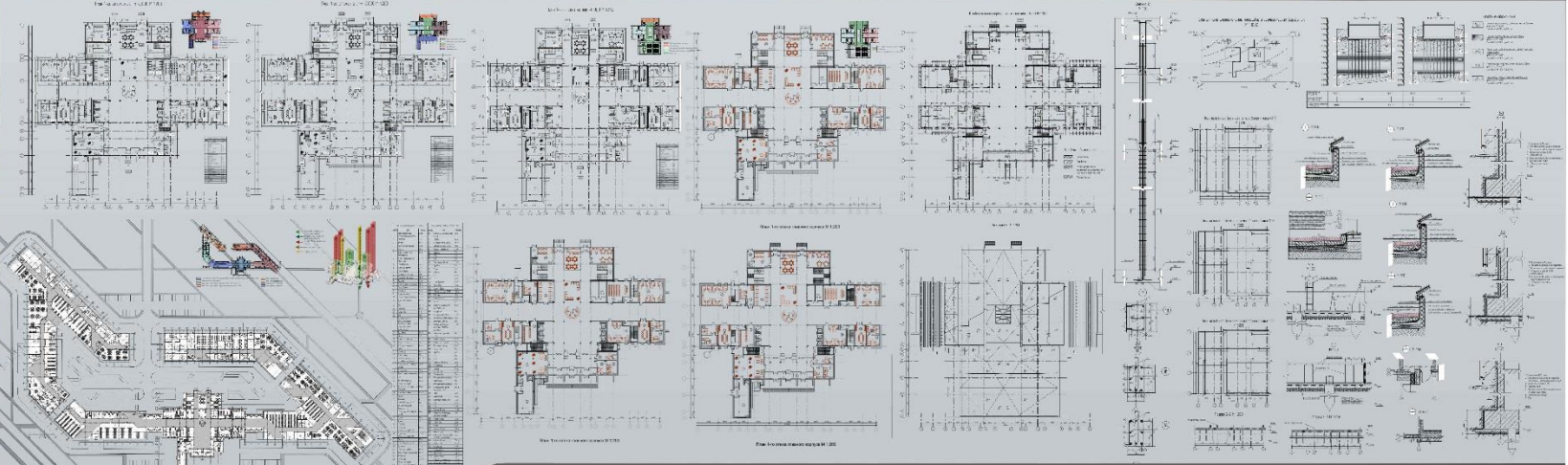
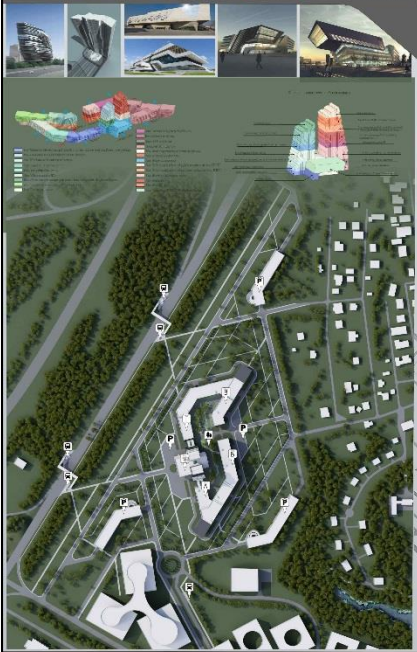
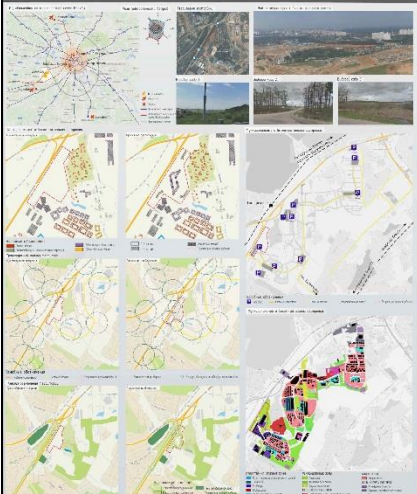
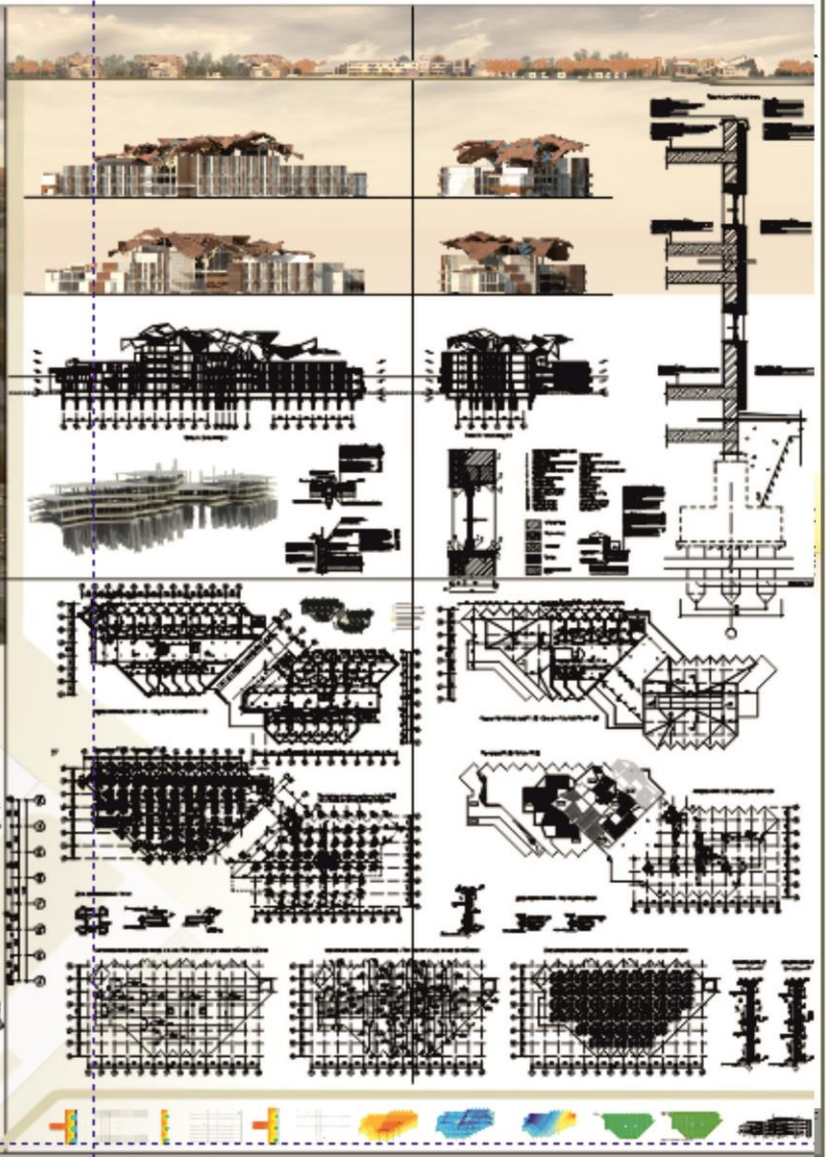
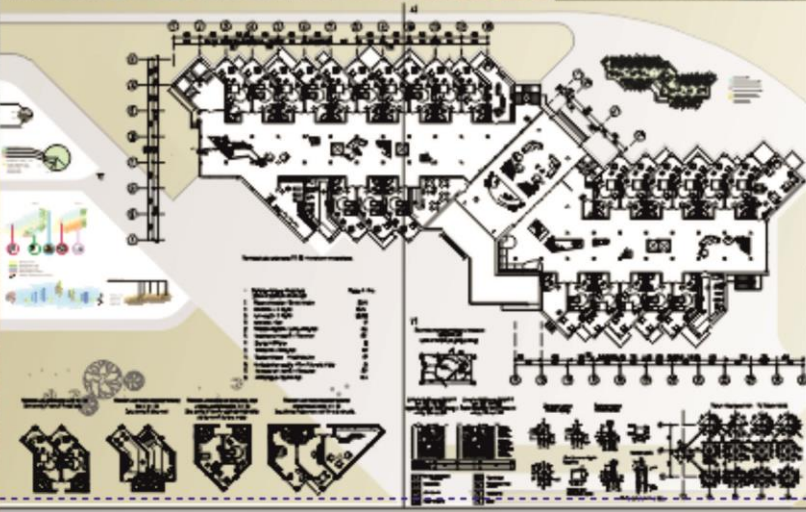
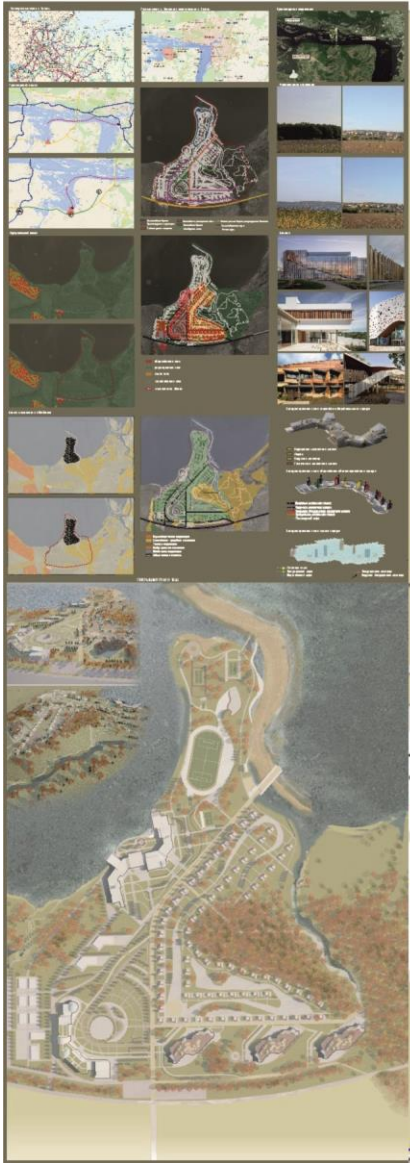


Технопарк ОАО «Сбербанк России» на территории инновационного центра «Сколково» Московской области.

Технопарк ОАО «Сбербанк России» на территории инновационного центра «Сколково».

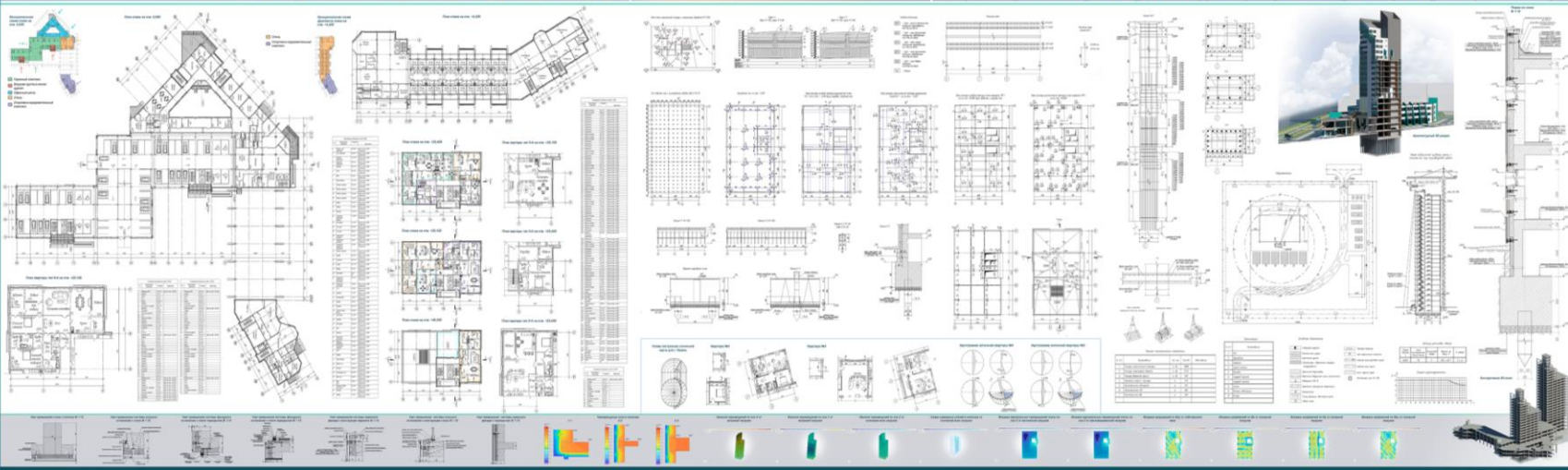


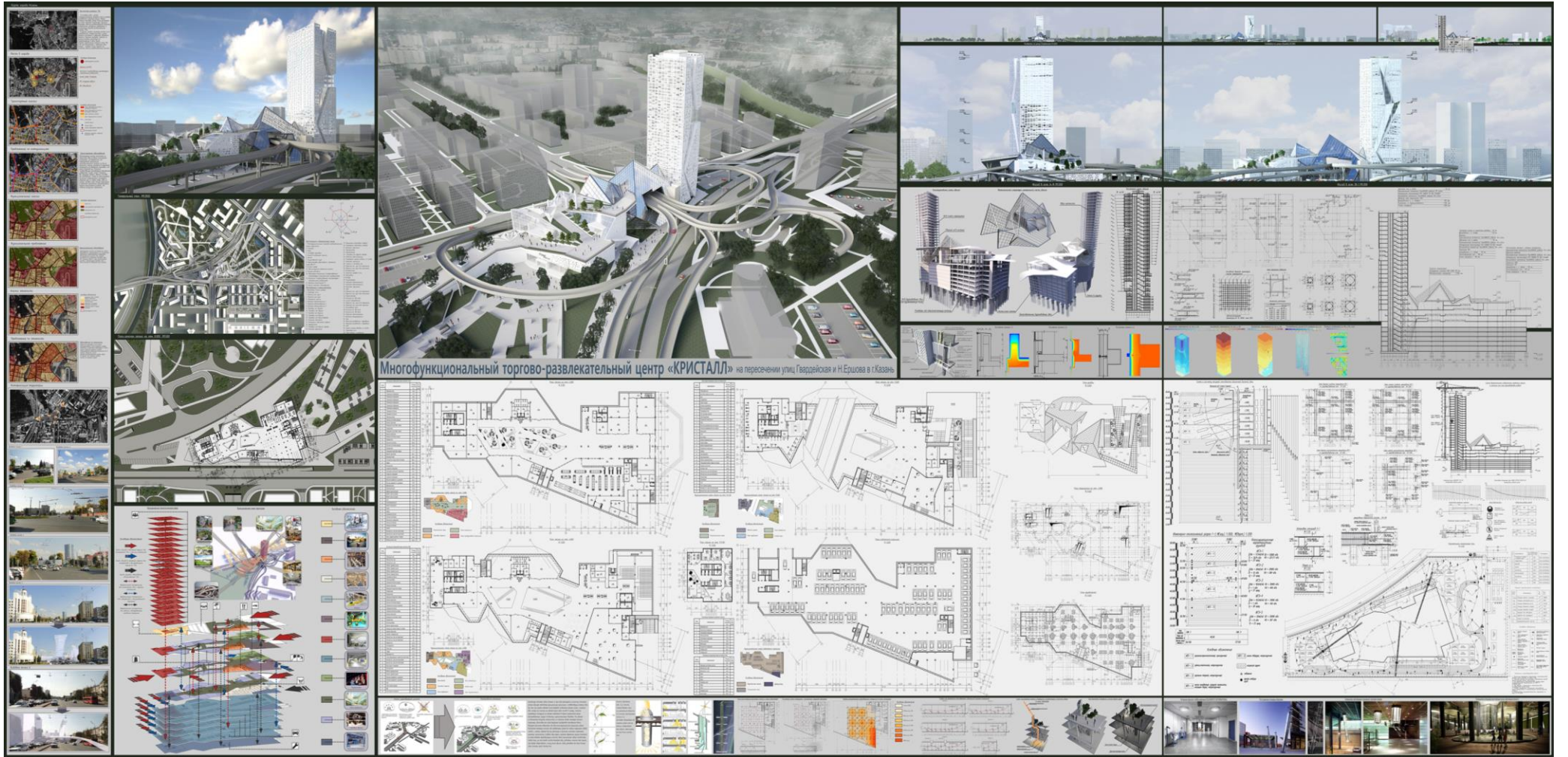






Многофункциональный жилой комплекс
по ул. Николая Ершова в г. Казань





This section contains a comprehensive site analysis. It includes:

- Topographic and site maps showing the project location within a regional context.
- Climate and environmental data charts, including wind rose diagrams and temperature/humidity profiles.
- Conceptual diagrams for building layout and site organization.
- Color-coded maps representing different site characteristics like topography, vegetation, and infrastructure.



This section displays architectural sections and elevations. It includes:

- Longitudinal and transverse sections showing the building's internal structure and roof profile.
- Elevations of the building's facade, highlighting its curved and layered design.
- Technical drawings of structural elements and details.
- A color-coded diagram showing the building's footprint and site layout.



This section contains detailed architectural floor plans and sections. It includes:

- Multiple floor plans at different levels, showing the building's complex, curved layout.
- Technical drawings of structural grids and dimensions.
- Sections showing the building's internal structure and roof profile.
- Architectural details and material specifications.

Бизнес-центр «Казань - Сити» по ул. Тихомирнова в г. Казань

